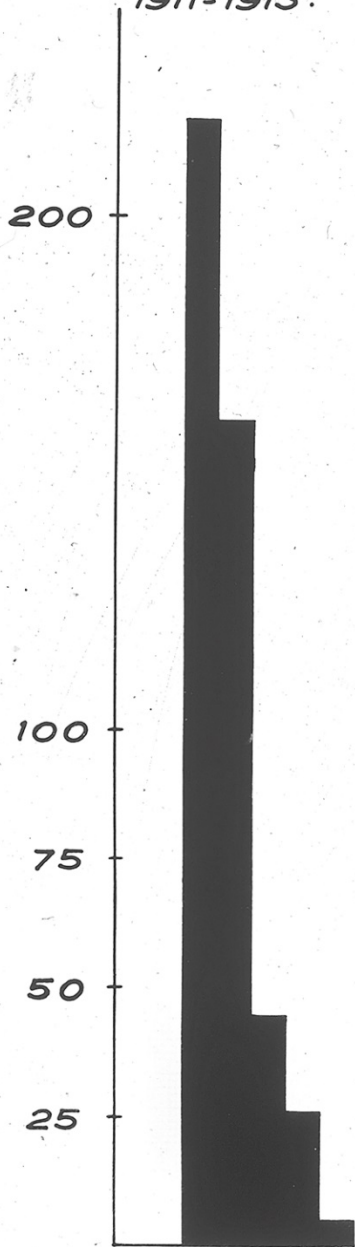


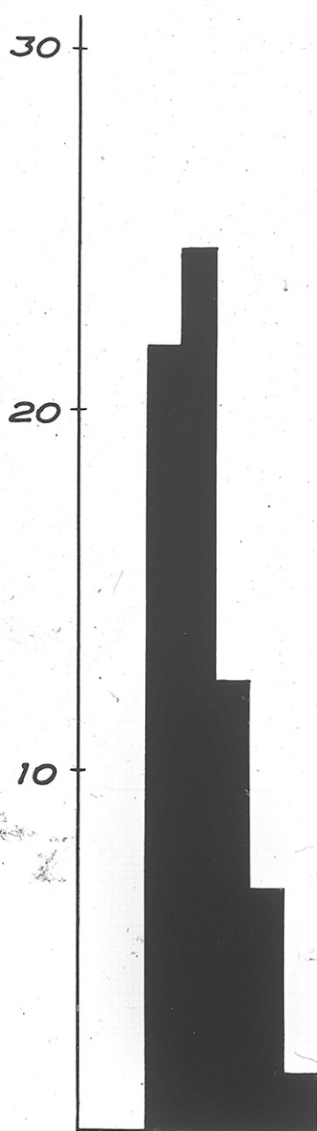
# Mean Annual Attack Rate per 100.000.

## CITIES AND TOWNS.

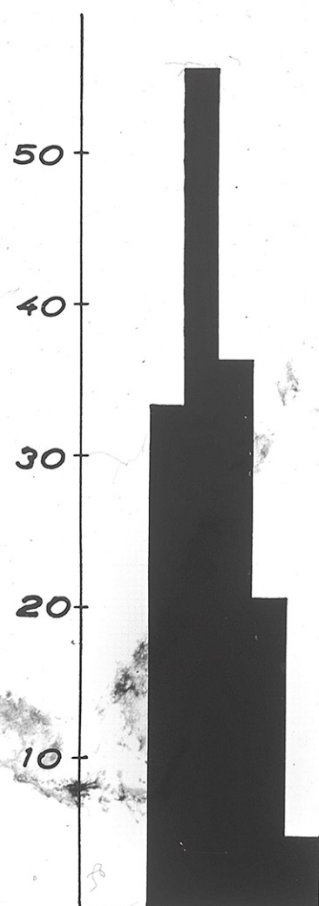
1911-1913:



1925-1934:



1935-1944:



Age group

0-3  
3-7  
7-15  
15-25  
> 25

0-3  
3-7  
7-15  
15-25  
> 25

0-3  
3-7  
7-15  
15-25  
> 25

Number of cases

1633

1128

3225