



Folkhälsomyndigheten

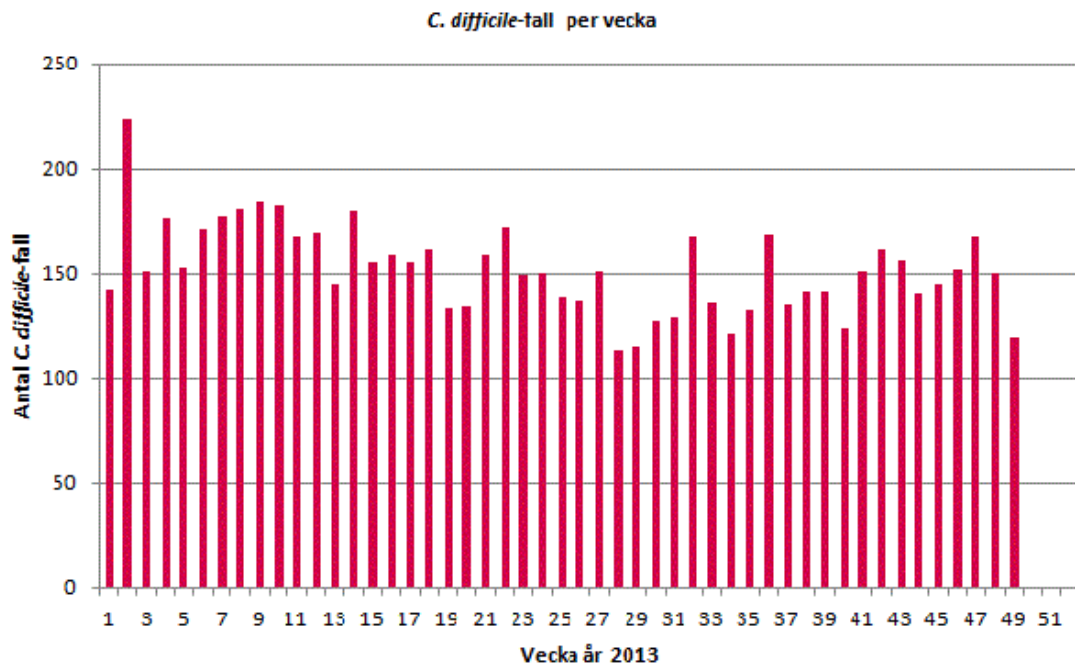
Clostridium difficile rapport, vecka 49 (2/12-8/12), 2013

Rapport om det aktuella bakterieläget

Redaktör: Barbro Mäkitalo

Varje vecka sammanställs data från den frivilliga rapporteringen av *C. difficile*. Sedan oktober 2011 deltar samtliga 26 laboratorier i den frivilliga rapporteringen av *C. difficile*. De mikrobiologiska laboratorierna i Kronoberg och Blekinge har gått ihop under 2011 och fr.o.m. 2012 rapporterar Växjö för båda laboratorierna. Nedan åskådliggörs hur utvecklingen av antal *C.difficile*-fall varierar per vecka. För att ett prov positivt för *C.difficile*-toxin ska anses vara ett nydiagnostiserat fall ska minst åtta veckor förflutit sedan föregående positiva prov. Det finns även två filer för nedladdning. I den första filen visas utvecklingen av inrapporterade *C.difficile*-fall per vecka för vart och ett av de rapporterande laboratorierna. Den sista filen innehåller sammanställningar i tabellform.

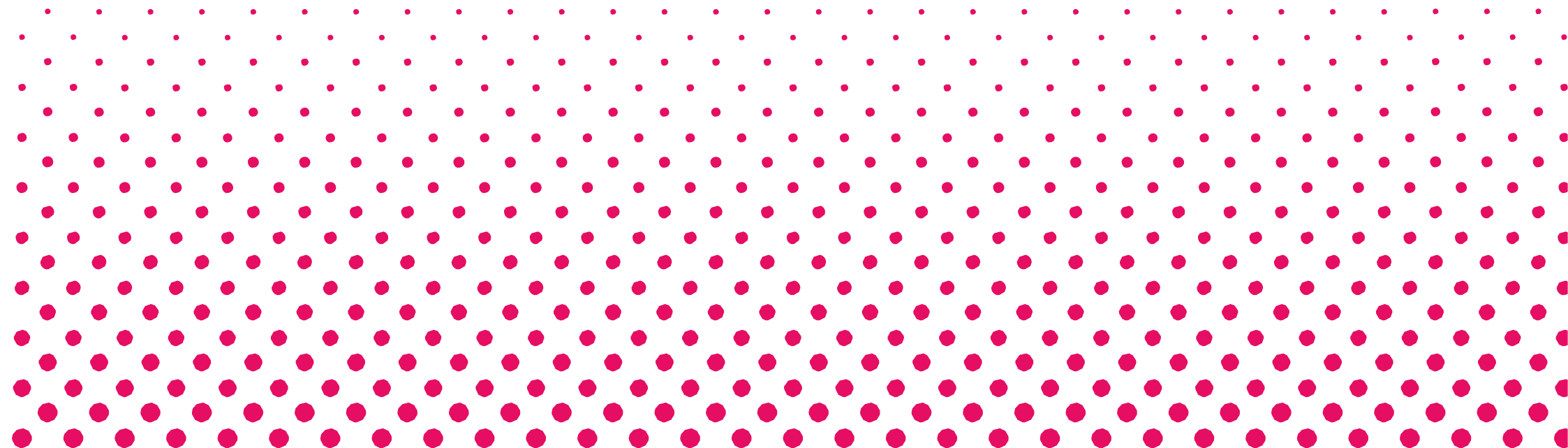
Siffrorna från de senaste två veckorna bör tolkas med försiktighet eftersom information kan saknas från vissa laboratorier då rapporten sammanställs.



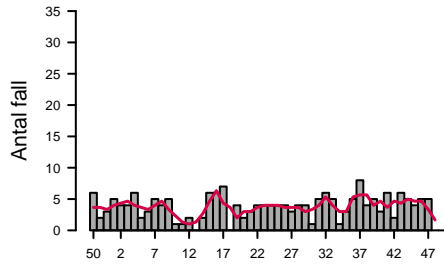
Clostridium difficile rapport

Veckovis sammanställning av den frivilliga laboratorierapporteringen av *Clostridium difficile*.

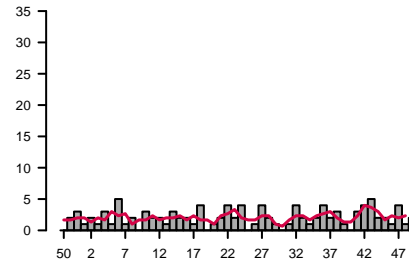
Barbro Mäkitalo, Thomas Åkerlund, Karin Tegmark-Wisell
Antibiotika och Vårdhygien



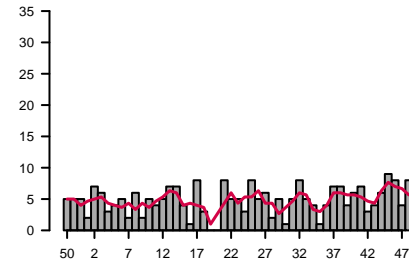
Aleris Medilab



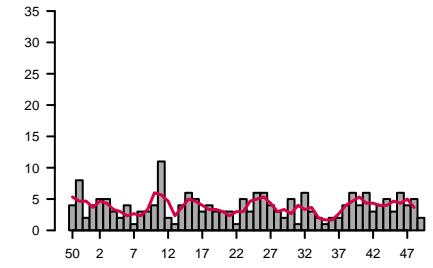
Borås



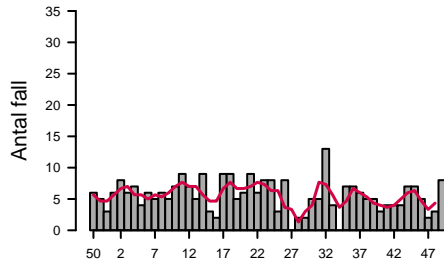
Eskilstuna



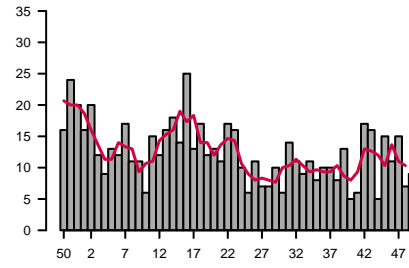
Falun



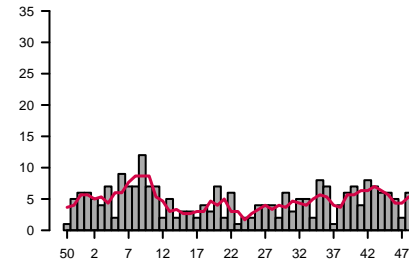
Gävle



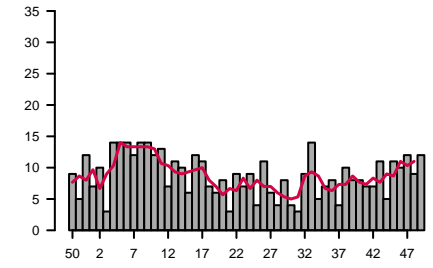
Göteborg



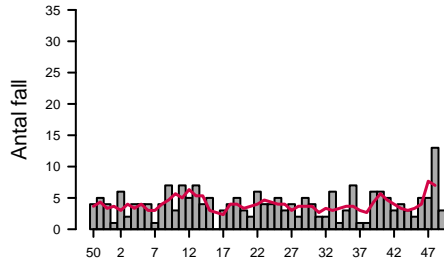
Halmstad



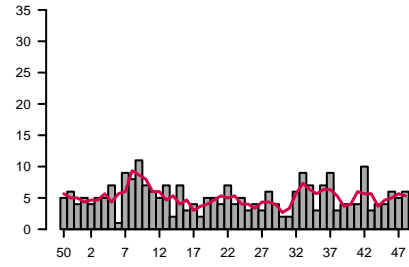
Jönköping



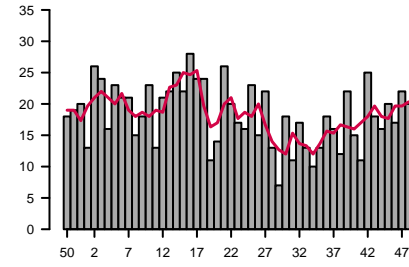
Kalmar



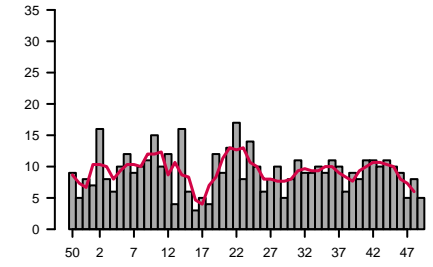
Karlstad



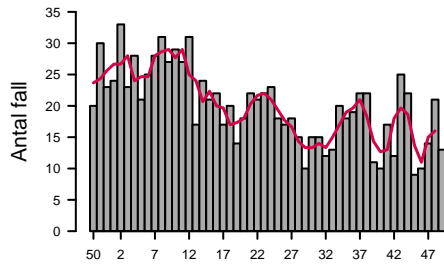
Karolinska



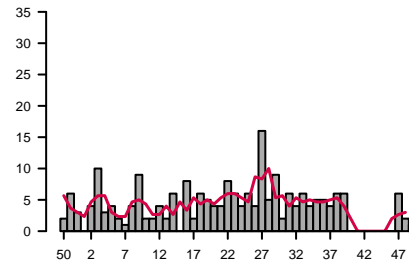
Linköping



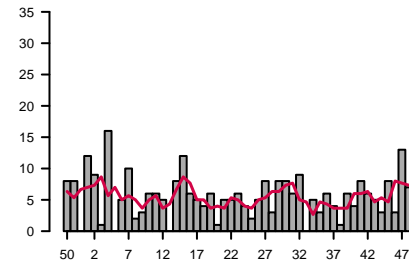
Malmö



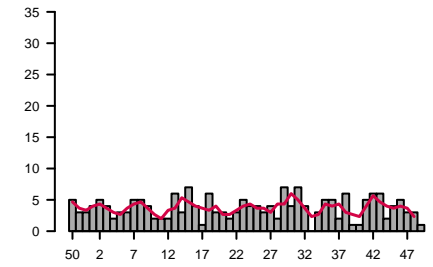
Skövde



Stockholm/Unilabs



Sunderby



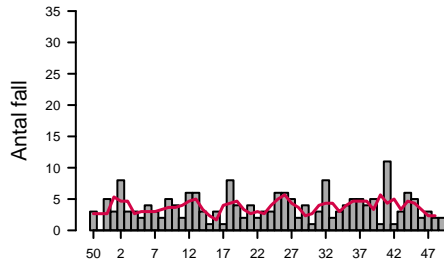
Vecka år 2012/2013

Vecka år 2012/2013

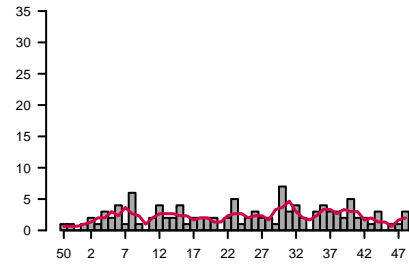
Vecka år 2012/2013

Vecka år 2012/2013

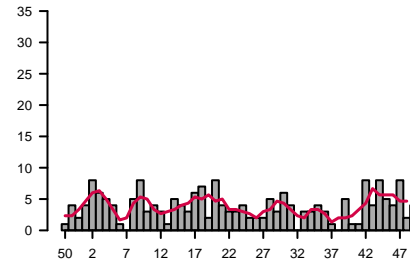
Sundsvall



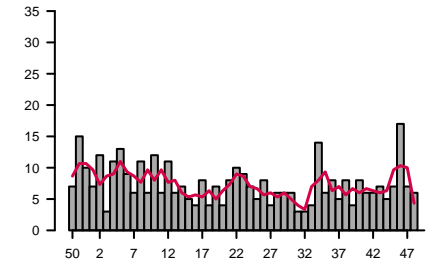
Trollhättan



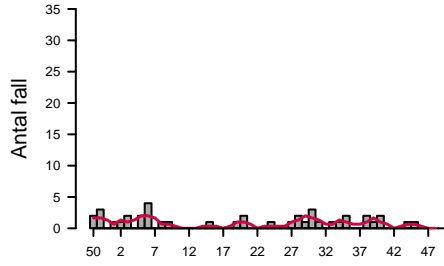
Umeå



Uppsala

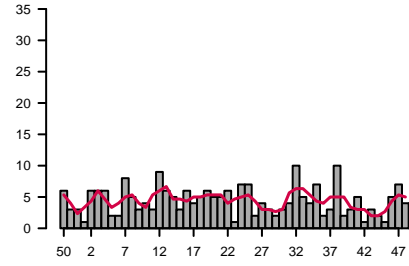


Visby



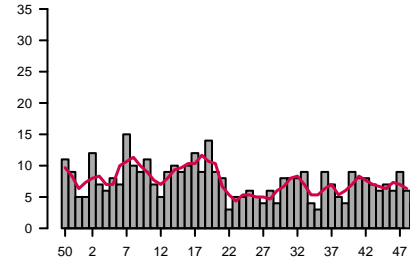
Vecka år 2012/2013

Västerås



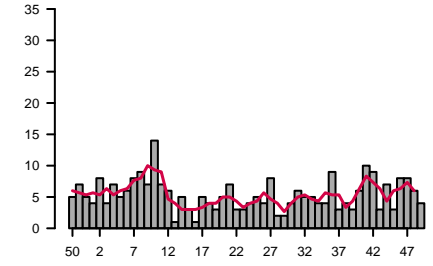
Vecka år 2012/2013

Växjö/Karlskrona



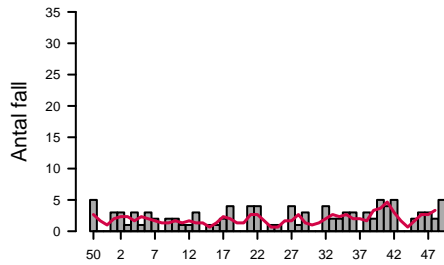
Vecka år 2012/2013

Örebro



Vecka år 2012/2013

Östersund



Vecka år 2012/2013



SMITTSKYDDSPENNINGEN
Swedish Institute for Communicable Disease Control

C. difficile rapport vecka 49, 2013

Fördelning av fall sker efter ankomstdatum för prov

Antal positiva fynd av C. difficile

| Laboratorium | Vecka 2013 | | | | | | | | | | | | | | | | | | | | | | | | | | | | | | | | | | | | | | | | | | | | | | | | Totalt | | | | |
|--|------------|------------|------------|------------|------------|------------|------------|------------|------------|------------|------------|------------|------------|------------|------------|------------|------------|------------|------------|------------|------------|------------|------------|------------|------------|------------|------------|------------|------------|------------|------------|------------|------------|------------|------------|------------|------------|------------|------------|------------|------------|------------|------------|------------|------------|------------|------------|------------|------------|-------------|-----|---|-----|
| | 1 | 2 | 3 | 4 | 5 | 6 | 7 | 8 | 9 | 10 | 11 | 12 | 13 | 14 | 15 | 16 | 17 | 18 | 19 | 20 | 21 | 22 | 23 | 24 | 25 | 26 | 27 | 28 | 29 | 30 | 31 | 32 | 33 | 34 | 35 | 36 | 37 | 38 | 39 | 40 | 41 | 42 | 43 | 44 | 45 | 46 | 47 | 48 | | 49 | | | |
| Aleris Medlab | 5 | 6 | 5 | 6 | 2 | 5 | 5 | 5 | 2 | 2 | 2 | 2 | 7 | 8 | 9 | 1 | 6 | 2 | 6 | 6 | 5 | 6 | 4 | 4 | 3 | 5 | 4 | 3 | 5 | 6 | 5 | 2 | 3 | 6 | 9 | 4 | 9 | 5 | 7 | 2 | 8 | 5 | 4 | 7 | 5 | 1 | 2 | 24 | | | | | |
| Borås klinisk mikrobiologi | 1 | 2 | 1 | 3 | 3 | 5 | 1 | 3 | 4 | 2 | 2 | 2 | 2 | 3 | 3 | 1 | 5 | 2 | 4 | 7 | 2 | 4 | 1 | 3 | 4 | 2 | 1 | 3 | 5 | 3 | 2 | 3 | 5 | 3 | 3 | 4 | 5 | 7 | 3 | 4 | 7 | 3 | 2 | 1 | 4 | 1 | 2 | 136 | | | | | |
| Eskilstuna/Unilabs | 3 | 8 | 9 | 3 | 4 | 7 | 2 | 8 | 3 | 5 | 7 | 5 | 8 | 9 | 5 | 1 | 11 | 4 | 1 | 13 | 6 | 6 | 3 | 9 | 7 | 9 | 5 | 7 | 5 | 8 | 6 | 8 | 2 | 5 | 9 | 11 | 4 | 7 | 9 | 6 | 4 | 6 | 12 | 9 | 6 | 9 | 6 | 309 | | | | | |
| Falun klinisk mikrobiologi | 5 | 7 | 7 | 3 | 4 | 5 | 2 | 5 | 5 | 13 | 3 | 4 | 7 | 8 | 7 | 5 | 5 | 4 | 5 | 5 | 2 | 5 | 6 | 7 | 8 | 4 | 5 | 4 | 6 | 2 | 8 | 4 | 6 | 2 | 2 | 3 | 6 | 7 | 5 | 6 | 5 | 4 | 7 | 3 | 7 | 7 | 5 | 3 | 253 | | | | |
| Gävle klinisk mikrobiologi | 8 | 8 | 9 | 12 | 5 | 9 | 7 | 7 | 6 | 8 | 11 | 9 | 9 | 11 | 5 | 4 | 11 | 12 | 7 | 7 | 12 | 7 | 13 | 12 | 6 | 10 | 1 | 5 | 3 | 5 | 8 | 18 | 7 | 1 | 11 | 8 | 8 | 7 | 7 | 3 | 5 | 5 | 5 | 8 | 10 | 6 | 4 | 4 | 372 | | | | |
| Göteborg, Sahlgrenska klinisk mikrobiologi | 20 | 23 | 23 | 14 | 19 | 19 | 20 | 16 | 15 | 12 | 20 | 12 | 19 | 21 | 18 | 29 | 18 | 20 | 12 | 16 | 17 | 23 | 18 | 16 | 14 | 12 | 9 | 7 | 14 | 6 | 19 | 16 | 16 | 14 | 11 | 16 | 13 | 12 | 15 | 7 | 8 | 19 | 21 | 11 | 18 | 19 | 20 | 13 | 10 | 780 | | | |
| Halmstad klinisk mikrobiologi | 7 | 6 | 5 | 7 | 4 | 12 | 11 | 9 | 15 | 10 | 8 | 5 | 6 | 2 | 3 | 6 | 5 | 6 | 6 | 10 | 2 | 6 | 2 | 2 | 2 | 4 | 4 | 7 | 4 | 6 | 6 | 8 | 6 | 5 | 12 | 7 | 2 | 7 | 7 | 7 | 5 | 10 | 11 | 8 | 10 | 7 | 3 | 8 | 319 | | | | |
| Jönköping klinisk mikrobiologi | 7 | 10 | 3 | 14 | 14 | 14 | 12 | 14 | 12 | 13 | 7 | 11 | 10 | 6 | 12 | 11 | 7 | 6 | 8 | 3 | 9 | 7 | 9 | 4 | 11 | 6 | 4 | 8 | 4 | 3 | 9 | 14 | 5 | 7 | 8 | 5 | 10 | 8 | 8 | 8 | 7 | 11 | 5 | 11 | 10 | 12 | 9 | 12 | 432 | | | | |
| Kalmar, klinisk mikrobiologi | 1 | 6 | 4 | 4 | 6 | 4 | 2 | 6 | 7 | 3 | 8 | 8 | 5 | 7 | 1 | 4 | 6 | 6 | 3 | 2 | 6 | 5 | 7 | 5 | 3 | 5 | 4 | 8 | 5 | 2 | 2 | 7 | 2 | 3 | 9 | 2 | 1 | 7 | 7 | 6 | 4 | 5 | 3 | 5 | 7 | 6 | 14 | 5 | 246 | | | | |
| Karlstad klinisk mikrobiologi | 6 | 6 | 6 | 6 | 10 | 1 | 12 | 8 | 15 | 8 | 8 | 7 | 11 | 4 | 9 | 5 | 6 | 5 | 4 | 10 | 7 | 6 | 5 | 5 | 3 | 7 | 5 | 3 | 2 | 6 | 10 | 8 | 4 | 8 | 9 | 3 | 5 | 7 | 5 | 11 | 6 | 7 | 8 | 6 | 7 | 7 | 6 | 324 | | | | | |
| Karolinska Universitetslaboratoriet | 14 | 32 | 33 | 18 | 31 | 33 | 29 | 27 | 37 | 26 | 23 | 29 | 38 | 36 | 27 | 36 | 30 | 31 | 25 | 17 | 42 | 30 | 19 | 28 | 22 | 30 | 19 | 17 | 20 | 17 | 24 | 19 | 16 | 21 | 23 | 18 | 30 | 18 | 18 | 34 | 25 | 21 | 29 | 25 | 27 | 24 | 22 | 1260 | | | | | |
| Linköping klinisk mikrobiologi | 15 | 22 | 10 | 8 | 15 | 14 | 13 | 11 | 21 | 19 | 14 | 16 | 5 | 17 | 9 | 6 | 9 | 6 | 13 | 17 | 14 | 18 | 10 | 14 | 15 | 11 | 10 | 13 | 7 | 11 | 17 | 11 | 11 | 11 | 11 | 12 | 17 | 10 | 12 | 14 | 12 | 16 | 13 | 24 | 13 | 14 | 6 | 14 | 6 | 627 | | | |
| Malmö, MAS klinisk mikrobiologi | 37 | 47 | 37 | 35 | 32 | 39 | 32 | 49 | 38 | 41 | 40 | 33 | 24 | 36 | 26 | 27 | 31 | 31 | 15 | 26 | 27 | 32 | 28 | 19 | 19 | 14 | 21 | 21 | 16 | 17 | 23 | 23 | 22 | 27 | 36 | 14 | 14 | 23 | 17 | 35 | 26 | 17 | 17 | 23 | 21 | 18 | 1319 | | | | | | |
| Skövde/Unilabs | 2 | 4 | 10 | 4 | 5 | 2 | 2 | 5 | 9 | 2 | 3 | 5 | 2 | 7 | 1 | 8 | 2 | 7 | 6 | 7 | 4 | 8 | 6 | 4 | 8 | 4 | 16 | 5 | 9 | 3 | 7 | 5 | 6 | 6 | 6 | 6 | 5 | 6 | 7 | | | | | | | | | 224 | | | | | |
| Sunderby klinisk mikrobiologi | 4 | 5 | 4 | 2 | 3 | 5 | 5 | 4 | 2 | 2 | 2 | 6 | 3 | 7 | 4 | 1 | 6 | 3 | 2 | 3 | 2 | 5 | 4 | 4 | 3 | 4 | 2 | 7 | 4 | 7 | 4 | 7 | 4 | 3 | 5 | 5 | 2 | 6 | 1 | 1 | 5 | 6 | 6 | 2 | 4 | 5 | 3 | 1 | 181 | | | | |
| Stockholm/Unilabs | 13 | 9 | 1 | 19 | 5 | 11 | 2 | 4 | 6 | 6 | 5 | 8 | 12 | 6 | 5 | 4 | 6 | 1 | 10 | 6 | 7 | 4 | 5 | 5 | 8 | 5 | 8 | 8 | 6 | 9 | 6 | 6 | 6 | 6 | 5 | 3 | 8 | 5 | 9 | 6 | 6 | 3 | 10 | 3 | 13 | 10 | 5 | 308 | | | | | |
| Sundsvall klinisk mikrobiologi | 3 | 9 | 5 | 9 | 4 | 6 | 3 | 2 | 6 | 4 | 4 | 8 | 7 | 6 | 5 | 4 | 2 | 10 | 7 | 4 | 6 | 3 | 5 | 4 | 8 | 7 | 6 | 4 | 5 | 2 | 7 | 8 | 3 | 3 | 6 | 7 | 6 | 5 | 6 | 3 | 17 | 4 | 5 | 7 | 10 | 3 | 3 | 4 | 268 | | | | |
| Trollhättan klinisk mikrobiologi | 1 | 3 | 1 | 3 | 3 | 5 | 2 | 6 | 1 | 5 | 5 | 2 | 3 | 4 | 1 | 2 | 3 | 3 | 4 | 2 | 3 | 6 | 2 | 3 | 2 | 2 | 2 | 8 | 3 | 4 | 5 | 1 | 4 | 6 | 3 | 5 | 2 | 10 | 4 | 3 | 3 | 4 | 2 | 2 | 1 | 3 | 2 | 156 | | | | | |
| Umeå klinisk mikrobiologi | 5 | 9 | 6 | 9 | 5 | 2 | 2 | 7 | 10 | 6 | 9 | 5 | 3 | 6 | 6 | 4 | 8 | 10 | 5 | 11 | 5 | 4 | 3 | 4 | 3 | 3 | 6 | 3 | 7 | 4 | 2 | 3 | 4 | 4 | 3 | 1 | 1 | 5 | 2 | 1 | 8 | 4 | 8 | 5 | 4 | 8 | 2 | 4 | 242 | | | | |
| Uppsala klinisk mikrobiologi | 7 | 12 | 3 | 11 | 13 | 9 | 6 | 11 | 6 | 12 | 6 | 12 | 6 | 7 | 5 | 4 | 8 | 4 | 7 | 4 | 8 | 10 | 9 | 7 | 5 | 8 | 4 | 6 | 6 | 6 | 3 | 3 | 5 | 14 | 6 | 8 | 5 | 8 | 4 | 8 | 6 | 6 | 7 | 5 | 8 | 18 | 7 | 6 | 349 | | | | |
| Visby klinisk mikrobiologi | 1 | 1 | 2 | 2 | 6 | 2 | 1 | 2 | 1 | 2 | 1 | 2 | 1 | 2 | 1 | 2 | 2 | 1 | 2 | 2 | 1 | 4 | 1 | 2 | 2 | 2 | 2 | 2 | 2 | 2 | 2 | 2 | 2 | 2 | 2 | 2 | 2 | 2 | 2 | 2 | 2 | 2 | 2 | 2 | 2 | 2 | 2 | 2 | 55 | | | | |
| Västerås klinisk mikrobiologi | 2 | 8 | 6 | 9 | 5 | 2 | 8 | 6 | 4 | 5 | 4 | 9 | 7 | 5 | 4 | 7 | 5 | 7 | 6 | 6 | 6 | 8 | 2 | 9 | 9 | 5 | 9 | 5 | 6 | 3 | 5 | 13 | 9 | 10 | 3 | 9 | 10 | 5 | 10 | 7 | 3 | 12 | 4 | 2 | 8 | 9 | 6 | 7 | 315 | | | | |
| Växjö/Karlskrona klinisk mikrobiologi | 9 | 17 | 9 | 9 | 14 | 13 | 20 | 12 | 11 | 14 | 18 | 10 | 14 | 15 | 19 | 15 | 13 | 18 | 11 | 12 | 11 | 10 | 8 | 16 | 10 | 7 | 8 | 8 | 6 | 10 | 7 | 8 | 9 | 13 | 11 | 12 | 9 | 8 | 9 | 12 | 8 | 8 | 17 | 13 | 9 | 12 | 9 | 10 | 11 | 11 | 11 | 8 | 566 |
| Örebro klinisk mikrobiologi | 7 | 10 | 6 | 13 | 8 | 13 | 13 | 9 | 16 | 9 | 9 | 4 | 7 | 6 | 3 | 7 | 6 | 3 | 6 | 9 | 4 | 4 | 6 | 8 | 6 | 10 | 4 | 3 | 4 | 7 | 10 | 7 | 7 | 4 | 13 | 4 | 6 | 5 | 7 | 10 | 10 | 6 | 10 | 7 | 10 | 12 | 10 | 7 | 373 | | | | |
| Östersund klinisk mikrobiologi | 4 | 4 | 4 | 3 | 2 | 3 | 2 | 1 | 2 | 2 | 1 | 1 | 3 | | | | | | | | | | | | | | | | | | | | | | | | | | | | | | | | | | | | | | 121 | | |
| Totalt | 187 | 274 | 209 | 224 | 217 | 231 | 222 | 240 | 248 | 224 | 236 | 209 | 201 | 231 | 204 | 204 | 208 | 213 | 175 | 179 | 221 | 224 | 188 | 196 | 181 | 174 | 190 | 152 | 157 | 155 | 173 | 211 | 179 | 166 | 178 | 200 | 182 | 191 | 186 | 172 | 191 | 201 | 216 | 189 | 203 | 202 | 206 | 189 | 150 | 9759 | | | |

Antal nydiagnostiserade fall av C. difficile *

| Laboratorium | Vecka 2013 | | | | | | | | | | | | | | | | | | | | | | | | | | | | | | | | | | | | | | | | | | | | | | | | Totalt | Varav uppgift saknas | | |
|--|------------|----|----|----|----|----|----|----|----|----|----|----|----|----|----|----|----|----|----|----|----|----|----|----|----|----|----|----|----|----|----|----|----|----|----|----|----|----|----|----|----|----|----|----|----|----|----|-----|--------|----------------------|-----|-----|
| | 1 | 2 | 3 | 4 | 5 | 6 | 7 | 8 | 9 | 10 | 11 | 12 | 13 | 14 | 15 | 16 | 17 | 18 | 19 | 20 | 21 | 22 | 23 | 24 | 25 | 26 | 27 | 28 | 29 | 30 | 31 | 32 | 33 | 34 | 35 | 36 | 37 | 38 | 39 | 40 | 41 | 42 | 43 | 44 | 45 | 46 | 47 | 48 | | | 49 | |
| Aleris Medlab | 5 | 4 | 4 | 6 | 2 | 3 | 5 | 4 | 5 | 1 | 1 | 2 | 2 | 6 | 6 | 7 | 4 | 2 | 3 | 4 | 4 | 4 | 4 | 4 | 4 | 3 | 4 | 4 | 1 | 5 | 6 | 5 | 1 | 3 | 5 | 8 | 4 | 5 | 3 | 6 | 2 | 6 | 5 | 4 | 5 | 5 | 5 | 1 | 182 | | | |
| Borås klinisk mikrobiologi | 1 | 2 | 1 | 3 | 1 | 5 | 1 | 2 | 3 | 2 | 2 | 1 | 4 | 3 | 2 | 2 | 1 | 4 | 1 | 2 | 4 | 2 | 4 | 1 | 4 | 2 | 1 | 4 | 2 | 1 | 2 | 4 | 2 | 3 | 1 | 3 | 4 | 5 | 2 | 2 | 1 | 4 | 1 | 4 | 1 | 2 | 1 | 4 | 1 | 101 | | |
| Eskilstuna/Unilabs | 2 | 7 | 6 | 3 | 4 | 5 | 2 | 6 | 2 | 5 | 4 | 5 | 7 | 7 | 4 | 1 | 8 | 3 | | | | | | | | | | | | | | | | | | | | | | | | | | | | | | | | | | 234 |
| Falun klinisk mikrobiologi | 4 | 5 | 5 | 3 | 2 | 4 | 1 | 3 | 3 | 4 | 11 | 2 | 1 | 4 | 6 | 5 | 3 | 4 | 3 | 3 | 1 | 5 | 3 | 6 | 6 | 4 | 3 | 2 | 5 | 1 | 6 | 3 | 2 | 1 | 2 | 2 | 4 | 6 | 4 | 6 | 3 | 4 | 5 | 3 | 6 | 4 | 5 | 2 | 183 | | | |
| Gävle klinisk mikrobiologi | 6 | 8 | 6 | 7 | 4 | 6 | 5 | 6 | 5 | 7 | 9 | 7 | 5 | 9 | 3 | 2 | 9 | 9 | 5 | 6 | 9 | 6 | 8 | 8 | 3 | 8 | | | | | | | | | | | | | | | | | | | | | | | | | 274 | |
| Göteborg, Sahlgrenska klinisk mikrobiologi | 16 | 20 | 12 | 9 | 13 | 12 | 17 | 11 | 11 | 6 | 15 | 12 | 16 | 18 | 14 | 25 | 13 | 17 | 12 | 13 | 11 | 17 | 16 | 10 | 6 | 11 | 7 | 7 | 10 | 6 | 14 | 11 | 9 | 11 | 8 | 10 | 10 | 8 | 13 | 5 | 6 | 17 | 16 | 5 | 15 | 11 | 15 | 7 | 9 | 583 | | |
| Halmstad klinisk mikrobiologi | 6 | 5 | 4 | 7 | 2 | 9 | 7 | 7 | 12 | 7 | 7 | 2 | 5 | 2 | 3 | 3 | 2 | 4 | 3 | 7 | 2 | 6 | 1 | 2 | 4 | 4 | 4 | 2 | 6 | 3 | 5 | 2 | 8 | 7 | 1 | 4 | 6 | 7 | 4 | 8 | 7 | 6 | 6 | 5 | 2 | 6 | 8 | 237 | | | | |
| Jönköping klinisk mikrobiologi | 7 | 10 | 3 | 14 | 14 | 14 | 12 | 14 | 12 | 13 | 7 | 11 | 10 | 6 | 12 | 11 | 7 | 6 | 8 | 3 | 9 | 7 | 9 | 4 | 11 | 6 | 4 | 8 | 4 | 3 | 9 | 14 | 5 | 7 | 8 | | | | | | | | | | | | | | | | | |

Har patienten tidigare lämnat positivt prov de senaste 8 veckorna (av totalt antal positiva fynd)

| Vecka 2013 | | 1 | 2 | 3 | 4 | 5 | 6 | 7 | 8 | 9 | 10 | 11 | 12 | 13 | 14 | 15 | 16 | 17 | 18 | 19 | 20 | 21 | 22 | 23 | 24 | 25 | 26 | 27 | 28 | 29 | 30 | 31 | 32 | 33 | 34 | 35 | 36 | 37 | 38 | 39 | 40 | 41 | 42 | 43 | 44 | 45 | 46 | 47 | 48 | 49 | Totalt |
|------------------|--|-----|-----|-----|-----|-----|-----|-----|-----|-----|-----|-----|-----|-----|-----|-----|-----|-----|-----|-----|-----|-----|-----|-----|-----|-----|-----|-----|-----|-----|-----|-----|-----|-----|-----|-----|-----|-----|-----|-----|-----|-----|-----|-----|-----|-----|-----|-----|-----|-----|--------|
| J | | 45 | 50 | 58 | 48 | 64 | 60 | 47 | 59 | 64 | 42 | 69 | 40 | 56 | 51 | 49 | 45 | 53 | 52 | 42 | 45 | 62 | 52 | 39 | 46 | 43 | 37 | 39 | 39 | 42 | 28 | 44 | 44 | 43 | 45 | 46 | 32 | 47 | 50 | 45 | 48 | 40 | 40 | 60 | 49 | 58 | 50 | 39 | 39 | 30 | 2315 |
| N | | 141 | 221 | 145 | 174 | 152 | 169 | 172 | 175 | 179 | 174 | 157 | 143 | 135 | 177 | 155 | 152 | 147 | 148 | 123 | 127 | 148 | 154 | 142 | 139 | 110 | 111 | 135 | 102 | 111 | 125 | 127 | 163 | 130 | 114 | 125 | 143 | 128 | 134 | 132 | 113 | 143 | 152 | 149 | 136 | 143 | 151 | 165 | 138 | 111 | 7040 |
| Uppgiften saknas | | 2 | 3 | 1 | | 2 | 1 | 1 | 3 | | 2 | 7 | 1 | 2 | | 7 | 1 | 7 | 7 | 6 | 2 | 9 | 5 | 5 | 9 | 10 | 10 | 1 | | | 1 | 4 | 5 | 7 | 4 | 9 | | 1 | | | | | | | | | | | 140 | | |
| Fält ej ifyllt | | 1 | 1 | 3 | 1 | 1 | | 5 | 5 | 2 | 8 | 8 | 19 | 9 | 1 | | 7 | 6 | 3 | 1 | 9 | 9 | 2 | 6 | 19 | 16 | 6 | 10 | 4 | 2 | 1 | | 1 | | 3 | 16 | 7 | 6 | 9 | 11 | 8 | 4 | 7 | 4 | 2 | 1 | 2 | 12 | 9 | 267 | |
| Totalt | | 187 | 274 | 209 | 224 | 217 | 231 | 225 | 240 | 248 | 224 | 236 | 209 | 201 | 231 | 204 | 204 | 208 | 213 | 175 | 179 | 221 | 224 | 188 | 196 | 181 | 174 | 190 | 152 | 157 | 155 | 173 | 211 | 179 | 166 | 178 | 200 | 182 | 191 | 186 | 172 | 191 | 201 | 216 | 189 | 203 | 202 | 206 | 189 | 150 | 9762 |

Kön (av totalt antal positiva fynd)

| Kön | | 1 | 2 | 3 | 4 | 5 | 6 | 7 | 8 | 9 | 10 | 11 | 12 | 13 | 14 | 15 | 16 | 17 | 18 | 19 | 20 | 21 | 22 | 23 | 24 | 25 | 26 | 27 | 28 | 29 | 30 | 31 | 32 | 33 | 34 | 35 | 36 | 37 | 38 | 39 | 40 | 41 | 42 | 43 | 44 | 45 | 46 | 47 | 48 | 49 | Totalt |
|---------------|--|-----|-----|-----|-----|-----|-----|-----|-----|-----|-----|-----|-----|-----|-----|-----|-----|-----|-----|-----|-----|-----|-----|-----|-----|-----|-----|-----|-----|-----|-----|-----|-----|-----|-----|-----|-----|-----|-----|-----|-----|-----|-----|-----|-----|-----|-----|-----|-----|-----|--------|
| Kvinna | | 95 | 149 | 117 | 129 | 113 | 127 | 128 | 139 | 128 | 106 | 123 | 99 | 107 | 121 | 102 | 113 | 127 | 103 | 101 | 93 | 117 | 114 | 102 | 120 | 97 | 98 | 103 | 84 | 79 | 73 | 107 | 109 | 97 | 93 | 103 | 118 | 83 | 101 | 104 | 101 | 103 | 120 | 119 | 103 | 115 | 100 | 125 | 111 | 77 | 5296 |
| Man | | 92 | 125 | 92 | 95 | 104 | 104 | 97 | 101 | 120 | 118 | 113 | 110 | 94 | 110 | 102 | 91 | 81 | 110 | 74 | 86 | 104 | 110 | 86 | 76 | 84 | 76 | 87 | 68 | 78 | 82 | 66 | 102 | 82 | 73 | 75 | 82 | 99 | 90 | 82 | 71 | 88 | 81 | 97 | 86 | 88 | 102 | 81 | 78 | 73 | 4466 |
| Totalt | | 187 | 274 | 209 | 224 | 217 | 231 | 225 | 240 | 248 | 224 | 236 | 209 | 201 | 231 | 204 | 204 | 208 | 213 | 175 | 179 | 221 | 224 | 188 | 196 | 181 | 174 | 190 | 152 | 157 | 155 | 173 | 211 | 179 | 166 | 178 | 200 | 182 | 191 | 186 | 172 | 191 | 201 | 216 | 189 | 203 | 202 | 206 | 189 | 150 | 9762 |

Resultat av analys (av totalt antal positiva fynd)

| Resultat av analys | | 1 | 2 | 3 | 4 | 5 | 6 | 7 | 8 | 9 | 10 | 11 | 12 | 13 | 14 | 15 | 16 | 17 | 18 | 19 | 20 | 21 | 22 | 23 | 24 | 25 | 26 | 27 | 28 | 29 | 30 | 31 | 32 | 33 | 34 | 35 | 36 | 37 | 38 | 39 | 40 | 41 | 42 | 43 | 44 | 45 | 46 | 47 | 48 | 49 | Totalt |
|--|--|-----|-----|-----|-----|-----|-----|-----|-----|-----|-----|-----|-----|-----|-----|-----|-----|-----|-----|-----|-----|-----|-----|-----|-----|-----|-----|-----|-----|-----|-----|-----|-----|-----|-----|-----|-----|-----|-----|-----|-----|-----|-----|-----|-----|-----|-----|-----|-----|-----|--------|
| Direktpositiv toxintest på feces | | 135 | 190 | 141 | 155 | 157 | 174 | 167 | 178 | 190 | 165 | 177 | 147 | 138 | 176 | 141 | 146 | 151 | 144 | 119 | 141 | 141 | 157 | 118 | 143 | 110 | 118 | 117 | 105 | 98 | 109 | 116 | 150 | 123 | 113 | 132 | 145 | 119 | 122 | 129 | 124 | 134 | 154 | 150 | 145 | 129 | 141 | 144 | 131 | 111 | 6860 |
| Direktpositiv toxintest på feces, Toxinpositiv från framodlad stam | | 11 | 26 | 12 | 18 | 19 | 19 | 9 | 15 | 10 | 16 | 11 | 24 | 22 | 12 | 19 | 10 | 12 | 15 | 16 | 8 | 17 | 10 | 12 | 11 | 18 | 11 | 10 | 11 | 9 | 8 | 11 | 10 | 9 | 17 | 15 | 19 | 11 | 13 | 9 | 13 | 22 | 11 | 12 | 10 | 19 | 23 | 11 | 12 | 6 | 674 |
| Toxinpositiv från framodlad stam | | 40 | 54 | 52 | 51 | 37 | 37 | 39 | 46 | 46 | 41 | 39 | 37 | 40 | 43 | 44 | 48 | 43 | 53 | 31 | 28 | 52 | 51 | 49 | 38 | 39 | 34 | 47 | 29 | 35 | 29 | 33 | 41 | 40 | 28 | 28 | 29 | 43 | 45 | 41 | 27 | 24 | 29 | 42 | 26 | 43 | 28 | 45 | 37 | 26 | 1907 |
| Fält ej ifyllt | | 1 | 4 | 4 | | 4 | 1 | 10 | 1 | 2 | 2 | 9 | 1 | 1 | | 2 | 1 | 9 | 2 | 11 | 6 | 9 | 4 | 14 | 11 | 16 | 7 | 15 | 9 | 13 | 10 | 7 | 8 | 3 | 7 | 9 | 11 | 7 | 8 | 11 | 7 | 12 | 8 | 12 | 10 | 6 | 9 | 7 | 321 | | |
| Totalt | | 187 | 274 | 209 | 224 | 217 | 231 | 225 | 240 | 248 | 224 | 236 | 209 | 201 | 231 | 204 | 204 | 208 | 213 | 175 | 179 | 221 | 224 | 188 | 196 | 181 | 174 | 190 | 152 | 157 | 155 | 173 | 211 | 179 | 166 | 178 | 200 | 182 | 191 | 186 | 172 | 191 | 201 | 216 | 189 | 203 | 202 | 206 | 189 | 150 | 9762 |