

# Fylogenetiskt träd influensa A(H1N1)pdm09 Hemagglutinin (HA1), aminosyrasekvens

Säsong 2017/2018 (fr.o.m. vecka 27, 2017)

Säsong 2016/2017

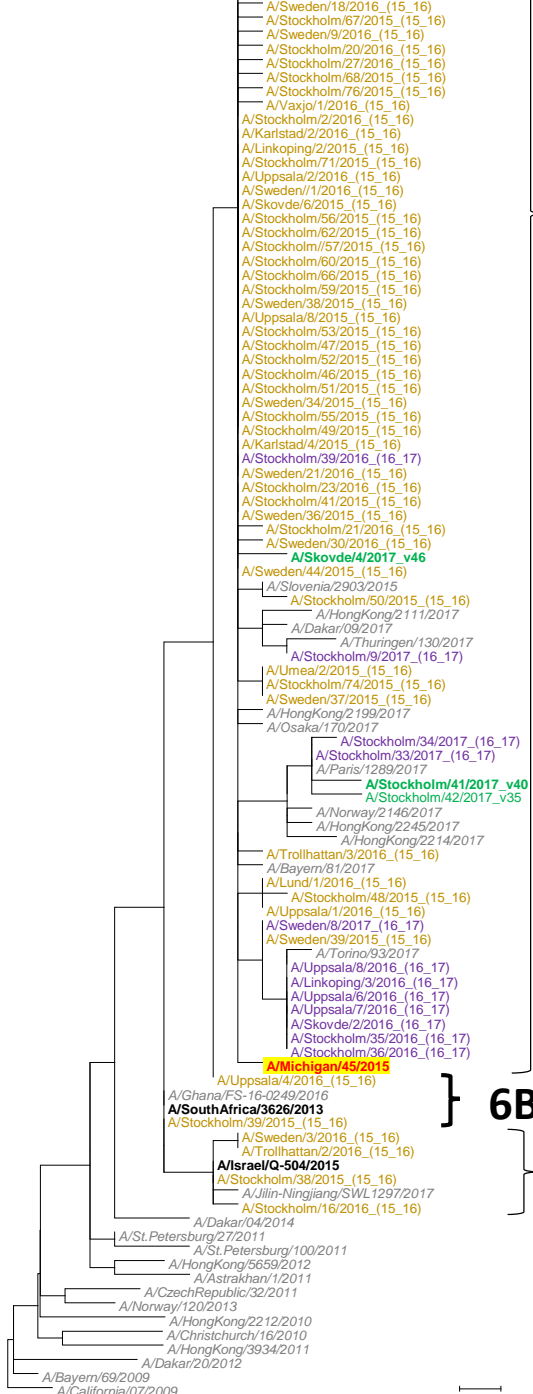
Säsong 2015/2015

**Vaccinstam 2017/2018**

Grupprepresentanter

Referensstammar

- A/Stockholm/10/2016\_(15\_16)
- A/Sweden/5/2016\_(15\_16)
- A/Stockholm/6/2016\_(15\_16)
- A/Sweden/35/2015\_(15\_16)
- A/Uppsala/5/2016\_(15\_16)
- A/Sweden/25/2016\_(15\_16)
- A/Sweden/26/2016\_(15\_16)
- A/Sweden/27/2016\_(15\_16)
- A/Sweden/28/2016\_(15\_16)
- A/Visby/1/2016\_(15\_16)
- A/Stockholm/18/2016\_(15\_16)
- A/Skovde/1/2016\_(15\_16)
- A/Stockholm/17/2016\_(15\_16)
- A/Sweden/19/2016\_(15\_16)
- A/Sweden/17/2016\_(15\_16)
- A/Sweden/11/2016\_(15\_16)
- A/Sweden/2/2016\_(15\_16)
- A/Sweden/13/2016\_(15\_16)
- A/Sweden/10/2016\_(15\_16)
- A/Sweden/42/2015\_(15\_16)
- A/Sweden/6/2016\_(15\_16)
- A/Sweden/4/2016\_(15\_16)
- A/Sweden/43/2015\_(15\_16)
- A/Sweden/12/2016\_(15\_16)
- A/Sweden/8/2016\_(15\_16)
- A/Sweden/7/2016\_(15\_16)
- A/Uppsala/3/2016\_(15\_16)
- A/Stockholm/11/2016\_(15\_16)
- A/Karlstad/4/2016\_(15\_16)
- A/Stockholm/3/2016\_(15\_16)
- A/Stockholm/4/2016\_(15\_16)
- A/Stockholm/7/2016\_(15\_16)
- A/Stockholm/15/2016\_(15\_16)
- A/Stockholm/5/2016\_(15\_16)
- A/Halmstad/1/2016\_(15\_16)
- A/Stockholm/8/2016\_(15\_16)
- A/Stockholm/12/2016\_(15\_16)
- A/Trollhattan/1/2016\_(15\_16)
- A/Stockholm/9/2016\_(15\_16)
- A/Stockholm/72/2015\_(15\_16)
- A/Jönköping/1/2015\_(15\_16)
- A/Karlstad/3/2016\_(15\_16)
- A/Linköping/3/2015\_(15\_16)
- A/Stockholm/69/2015\_(15\_16)
- A/Karlstad/1/2016\_(15\_16)
- A/Stockholm/70/2015\_(15\_16)
- A/Sweden/18/2016\_(15\_16)
- A/Stockholm/67/2015\_(15\_16)
- A/Sweden/9/2016\_(15\_16)
- A/Stockholm/20/2016\_(15\_16)
- A/Stockholm/27/2016\_(15\_16)
- A/Stockholm/68/2015\_(15\_16)
- A/Stockholm/76/2015\_(15\_16)
- A/Vaxjo/1/2016\_(15\_16)
- A/Stockholm/2/2016\_(15\_16)
- A/Karlstad/2/2016\_(15\_16)
- A/Linköping/2/2015\_(15\_16)
- A/Stockholm/71/2015\_(15\_16)
- A/Uppsala/2/2016\_(15\_16)
- A/Sweden/1/2016\_(15\_16)
- A/Skovde/6/2015\_(15\_16)
- A/Stockholm/56/2015\_(15\_16)
- A/Stockholm/62/2015\_(15\_16)
- A/Stockholm/57/2015\_(15\_16)
- A/Stockholm/60/2015\_(15\_16)
- A/Stockholm/66/2015\_(15\_16)
- A/Stockholm/59/2015\_(15\_16)
- A/Sweden/38/2015\_(15\_16)
- A/Uppsala/8/2015\_(15\_16)
- A/Stockholm/53/2015\_(15\_16)
- A/Stockholm/47/2015\_(15\_16)
- A/Stockholm/52/2015\_(15\_16)
- A/Stockholm/46/2015\_(15\_16)
- A/Stockholm/51/2015\_(15\_16)
- A/Sweden/34/2015\_(15\_16)
- A/Stockholm/55/2015\_(15\_16)
- A/Stockholm/49/2015\_(15\_16)
- A/Karlstad/4/2015\_(15\_16)
- A/Stockholm/39/2016\_(16\_17)
- A/Sweden/21/2016\_(15\_16)
- A/Stockholm/23/2016\_(15\_16)
- A/Stockholm/41/2015\_(15\_16)
- A/Sweden/36/2015\_(15\_16)
- A/Stockholm/21/2016\_(15\_16)
- A/Skovde/4/2017\_v46
- A/Sweden/44/2015\_(15\_16)
- A/Slovenia/2903/2015
- A/Stockholm/50/2015\_(15\_16)
- A/HongKong/2111/2017
- A/Dakar/09/2017
- A/Thuringen/130/2017
- A/Stockholm/9/2017\_(16\_17)
- A/Umea/2/2015\_(15\_16)
- A/Stockholm/74/2015\_(15\_16)
- A/Sweden/37/2015\_(15\_16)
- A/HongKong/2199/2017
- A/Osaka/170/2017
- A/Stockholm/34/2017\_(16\_17)
- A/Stockholm/33/2017\_(16\_17)
- A/Paris/1289/2017
- A/Stockholm/41/2017\_v40
- A/Stockholm/42/2017\_v35
- A/Norway/2146/2017
- A/HongKong/2245/2017
- A/HongKong/2214/2017
- A/Trollhattan/3/2016\_(15\_16)
- A/Bayern/81/2017
- A/Lund/1/2016\_(15\_16)
- A/Stockholm/48/2015\_(15\_16)
- A/Uppsala/1/2016\_(15\_16)
- A/Sweden/8/2017\_(16\_17)
- A/Sweden/39/2015\_(15\_16)
- A/Torino/93/2017
- A/Uppsala/8/2016\_(16\_17)
- A/Linköping/3/2016\_(16\_17)
- A/Uppsala/6/2016\_(16\_17)
- A/Uppsala/7/2016\_(16\_17)
- A/Skovde/2/2016\_(16\_17)
- A/Stockholm/35/2016\_(16\_17)
- A/Stockholm/36/2016\_(16\_17)
- A/Michigan/45/2015
- A/Uppsala/4/2016\_(15\_16)
- A/Ghana/FS-16-0249/2016
- A/SouthAfrica/3626/2013
- A/Stockholm/39/2015\_(15\_16)
- A/Sweden/3/2016\_(15\_16)
- A/Trollhattan/2/2016\_(15\_16)
- A/Israel/Q-504/2015
- A/Stockholm/38/2015\_(15\_16)
- A/Jilin-Ningjiang/SWL1297/2017
- A/Stockholm/16/2016\_(15\_16)
- A/Dakar/04/2014
- A/St.Petersburg/27/2011
- A/St.Petersburg/100/2011
- A/HongKong/5659/2012
- A/Astrakhan/1/2011
- A/CzechRepublic/32/2011
- A/Norway/120/2013
- A/HongKong/2212/2010
- A/Christchurch/16/2010
- A/HongKong/3934/2011
- A/Dakar/20/2012
- A/Bayern/69/2009
- A/California/07/2009



6B.1

6B

6B.2

0.005