

Fylogenetiskt träd HA (full nt)

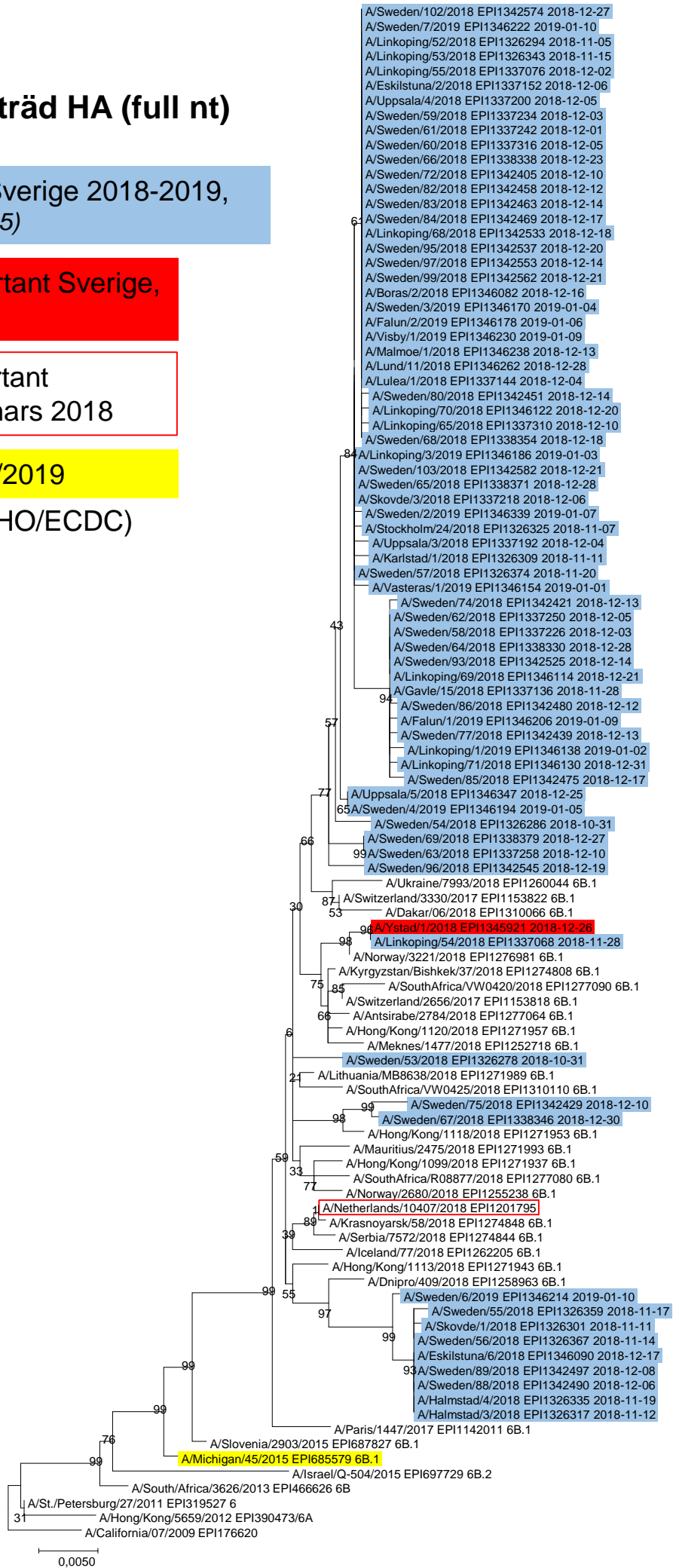
A(H1N1)pdm09 Sverige 2018-2019, v40- (GISAID 190125)

A(H1N2) Reassortant Sverige, dec 2018

A(H1N2) Reassortant Nederländerna, mars 2018

Vaccinstam 2018/2019

Referensvirus (WHO/ECDC)



Fylogenetiskt träd NA (full nt)

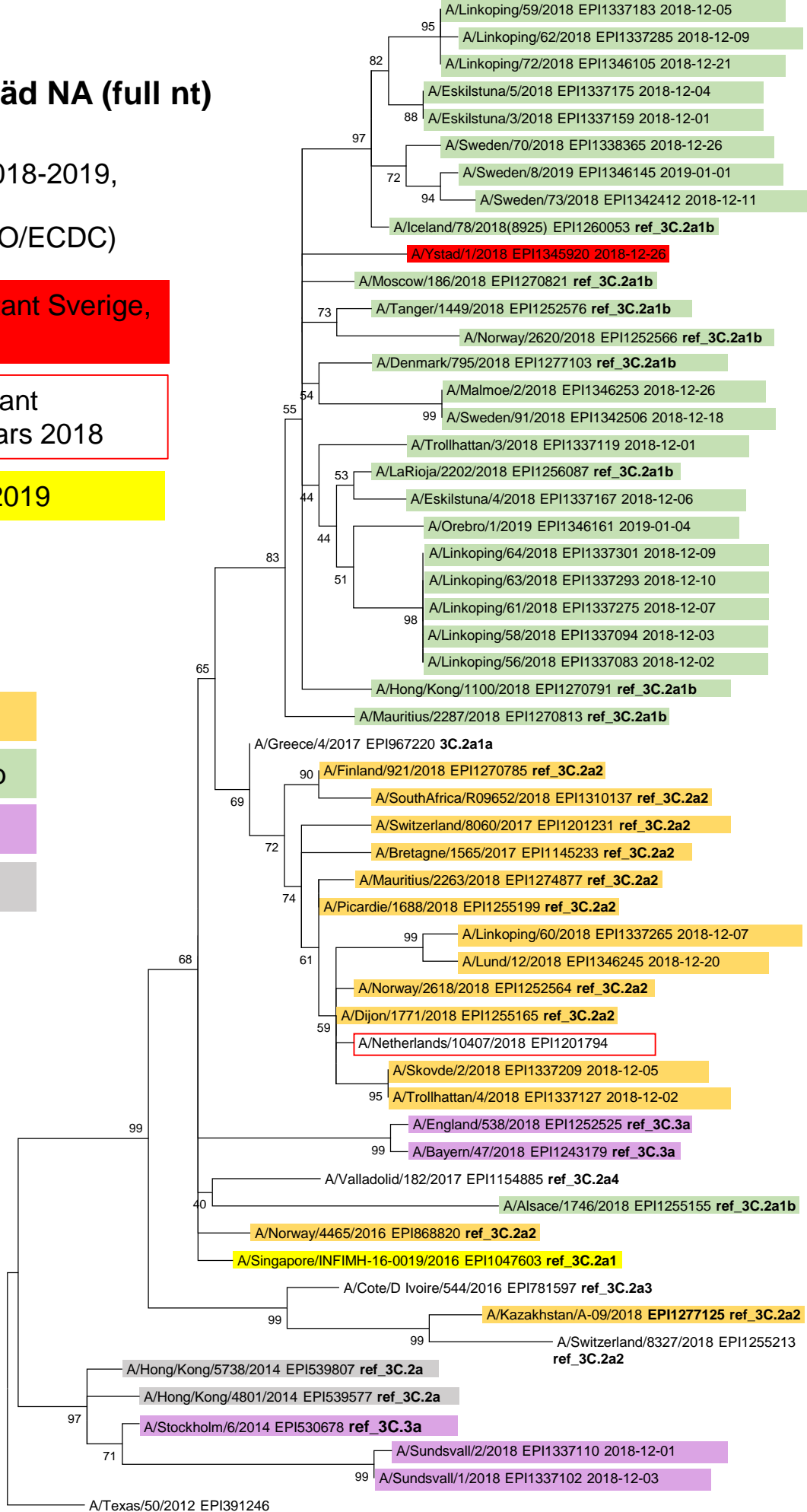
A(H3N2) Sverige 2018-2019,
v40- (GISAID 190125)
+referensvirus (WHO/ECDC)

A(H1N2) Reassortant Sverige,
dec 2018

A(H1N2) Reassortant
Nederländerna, mars 2018

Vaccinstam 2018/2019

- Grupp 3C.2a2
- Grupp 3C.2a1b
- Grupp 3C.3a
- Grupp 3C.2a



0,0020

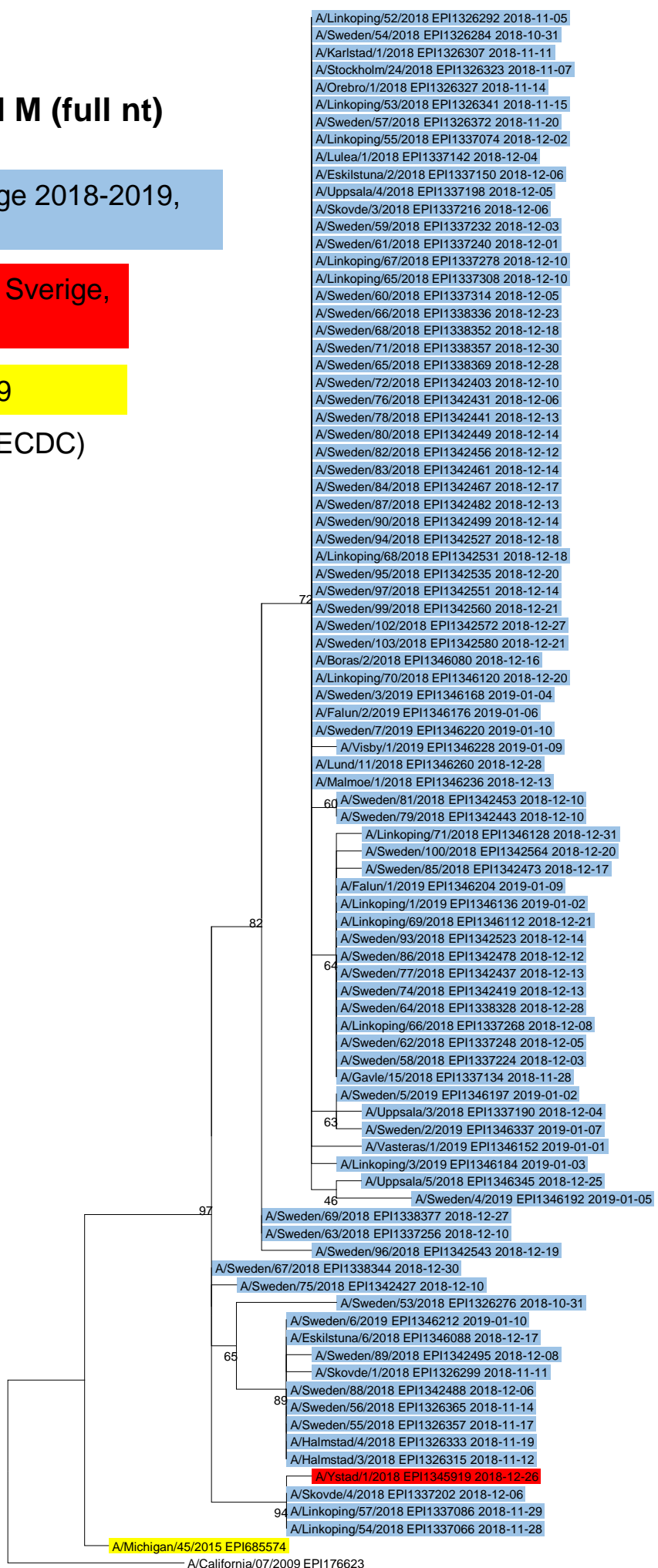
Fylogenetiskt träd M (full nt)

A(H1N1)pdm09 Sverige 2018-2019,
v40- (GISAID 190125)

A(H1N2) Reassortant Sverige,
dec 2018

Vaccinstam 2018/2019

Referensvirus (WHO/ECDC)



0.0020

Fylogenetiskt träd NS (full nt)

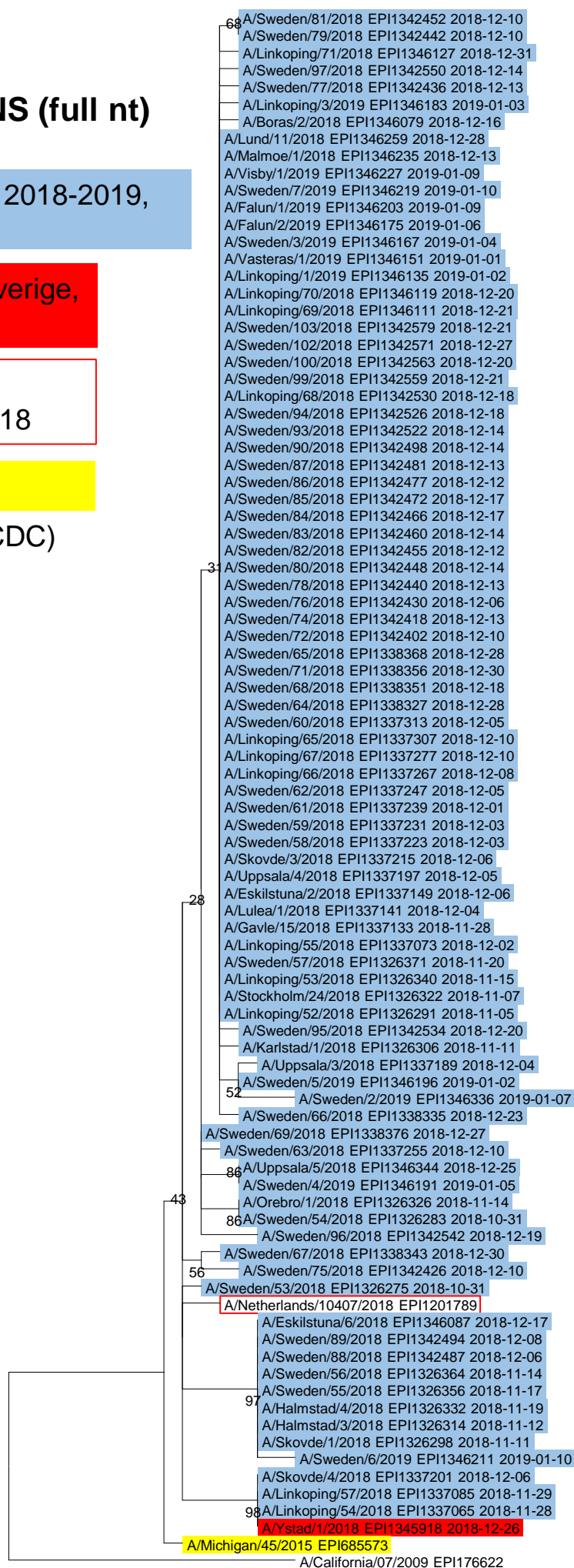
A(H1N1)pdm09 Sverige 2018-2019, v40- (GISAID 190125)

A(H1N2) Reassortant Sverige, dec 2018

A(H1N2) Reassortant Nederländerna, mars 2018

Vaccinstam 2018/2019

Referensvirus (WHO/ECDC)



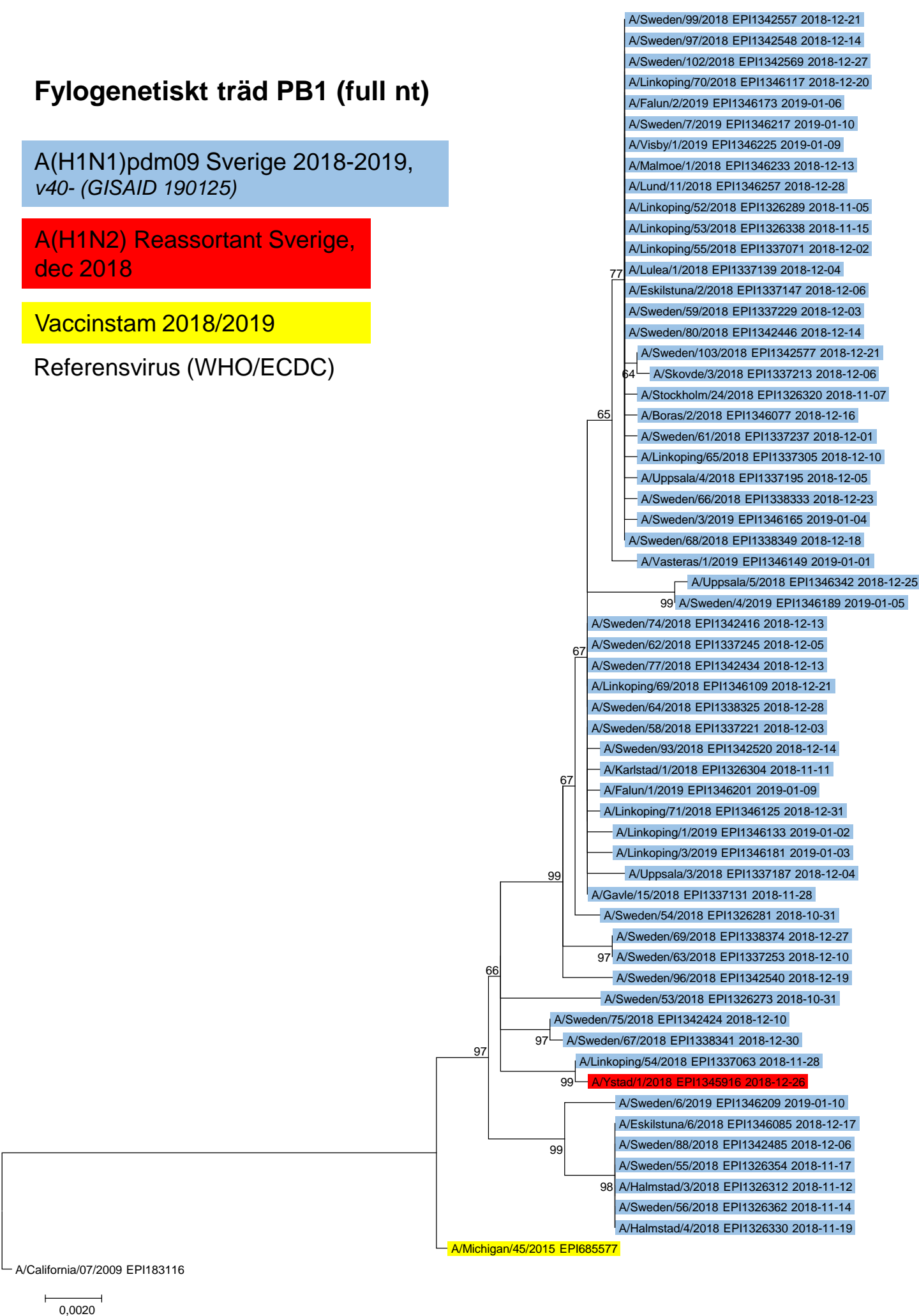
Fylogenetiskt träd PB1 (full nt)

A(H1N1)pdm09 Sverige 2018-2019,
v40- (GISAID 190125)

A(H1N2) Reassortant Sverige,
dec 2018

Vaccinstam 2018/2019

Referensvirus (WHO/ECDC)



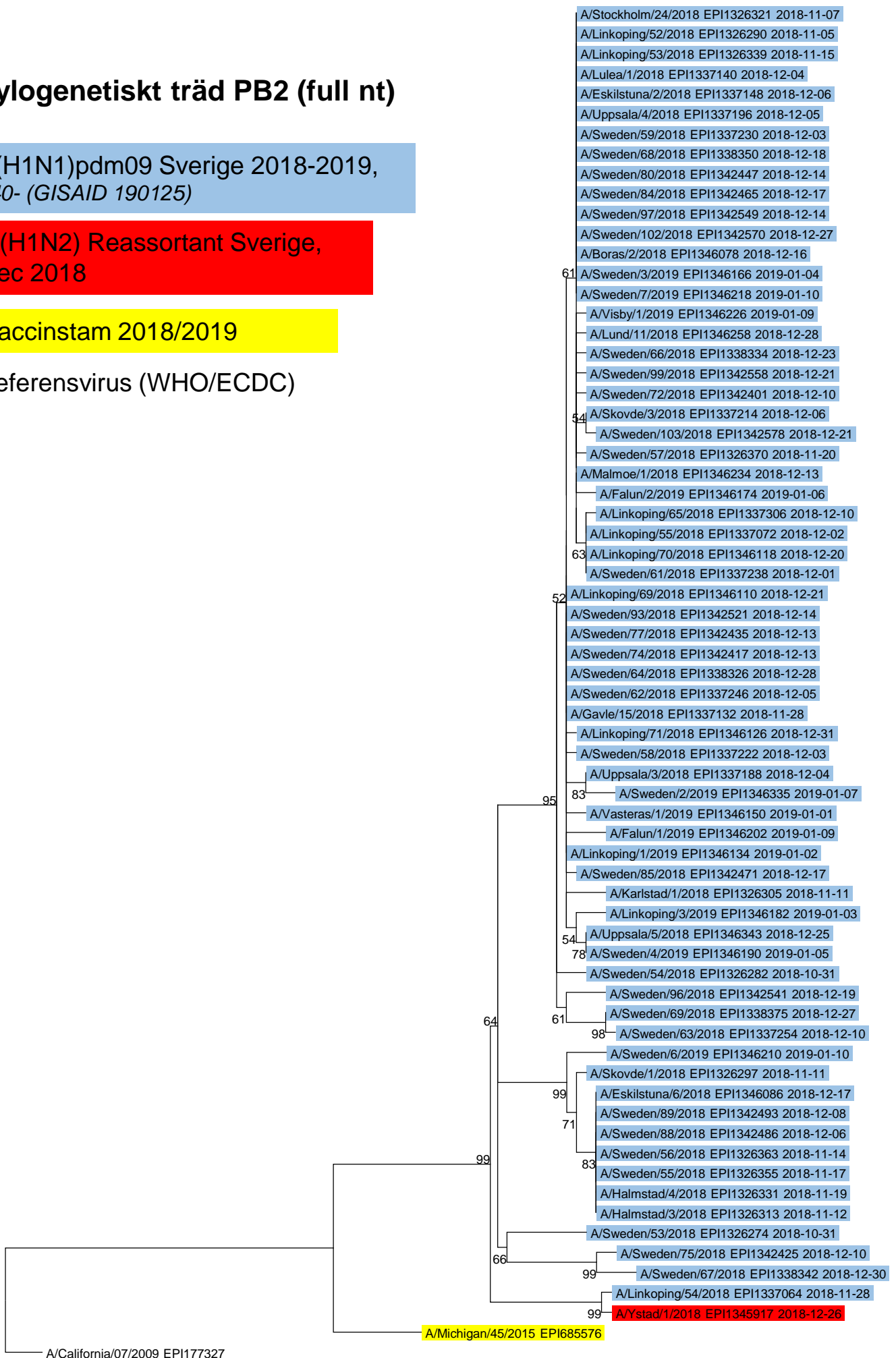
Fylogenetiskt träd PB2 (full nt)

A(H1N1)pdm09 Sverige 2018-2019,
v40- (GISAID 190125)

A(H1N2) Reassortant Sverige,
dec 2018

Vaccinstam 2018/2019

Referensvirus (WHO/ECDC)



0,0020

Fylogenetiskt träd NP (full nt)

A(H1N1)pdm09 Sverige 2018-2019, v40- (GISAID 190125)

A(H1N2) Reassortant Sverige, dec 2018

Vaccinstam

Referensvirus (WHO/ECDC)



Fylogenetiskt träd PA (full nt)

A(H1N1)pdm09 Sverige 2018-2019,
v40- (GISAID 190125)

A(H1N2) Reassortant Sverige,
dec 2018

Vaccinstam 2018/2019

Referensvirus (WHO/ECDC)

